

PRODUCT INFORMATION PACKET

Model No: 182TTDW14011

Catalog No: U165A

5 HP Close-Coupled Pump Motor, 3 phase, 3600 RPM, 230/460 V, 182JP Frame, ODP
JP Motors



Regal and Marathon are trademarks of Regal Beloit Corporation or one of its affiliated companies.
©2021 Regal Beloit Corporation, All Rights Reserved. MC017097E

REGAL

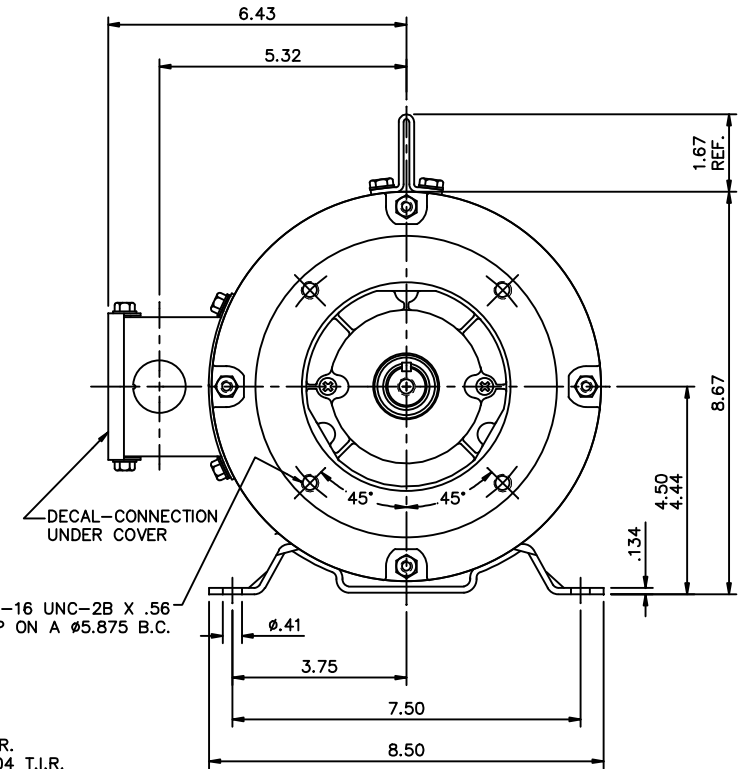
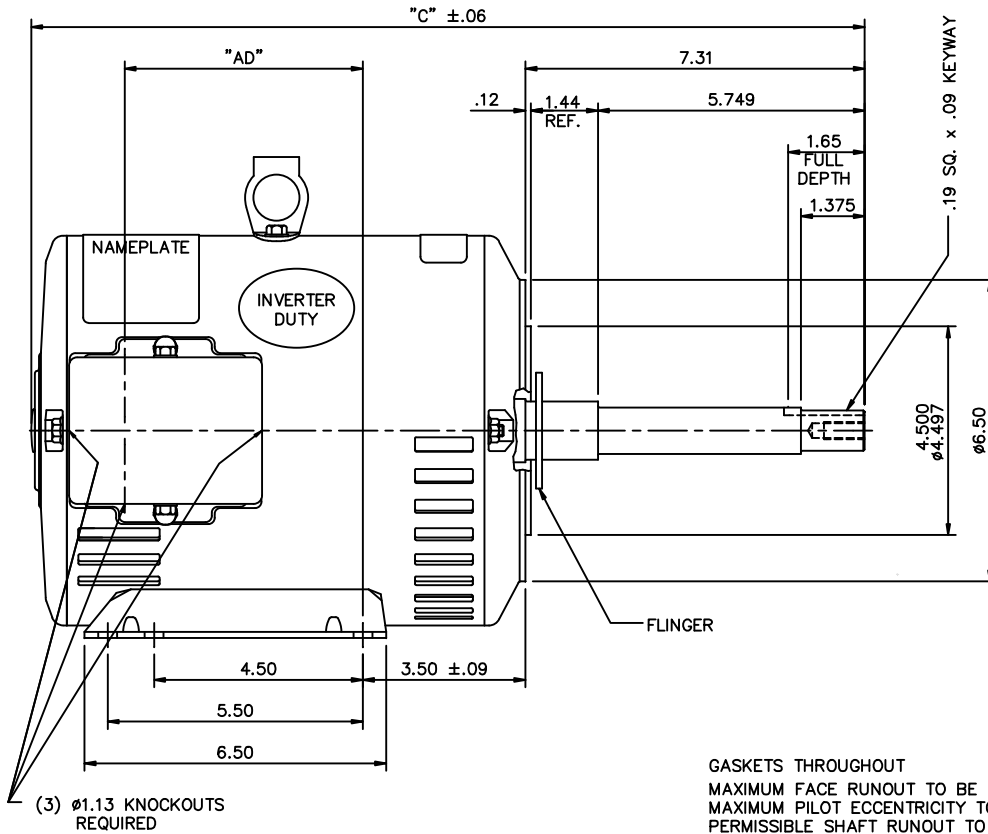
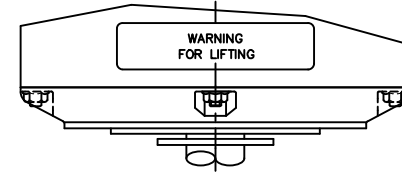
Nameplate Specifications

Output HP	5 Hp	Output KW	3.7 kW
Frequency	60 Hz	Voltage	230/460 V
Current	12.4/6.2 A	Speed	3505 rpm
Service Factor	1.15	Phase	3
Efficiency	85.5 %	Power Factor	87.5
Duty	Continuous	Insulation Class	F
Design Code	B	KVA Code	J
Frame	182JP	Enclosure	Drip Proof
Thermal Protection	No	Ambient Temperature	40 °C
Drive End Bearing Size	6207	Opp Drive End Bearing Size	6205
UL	Recognized	CSA	Y
CE	Y	IP Code	12

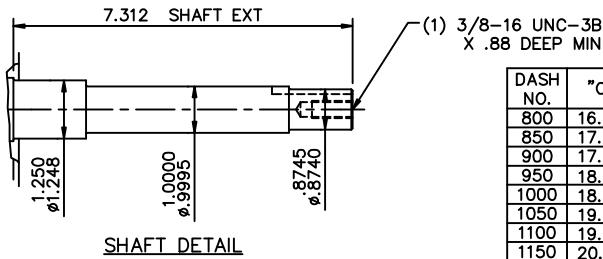
Technical Specifications

Electrical Type	Squirrel Cage Induction Run	Starting Method	Across The Line
Poles	2	Rotation	Reversible
Resistance Main	2.8 Ohms	Mounting	Rigid base
Motor Orientation	Horizontal	Drive End Bearing	Ball
Opp Drive End Bearing	Ball	Frame Material	Rolled Steel
Shaft Type	JP	Overall Length	17.96 in
Frame Length	9.00 in	Shaft Diameter	0.880 in
Shaft Extension	7.31 in	Assembly/Box Mounting	F1/F2 CAPABLE
Connection Drawing	005010.01ME	Outline Drawing	035577-900

This is an uncontrolled document once printed or downloaded and is subject to change without notice. Date Created:20/01/2021



GASKETS THROUGHOUT
 MAXIMUM FACE RUNOUT TO BE .004 T.I.R.
 MAXIMUM PILOT ECCENTRICITY TO BE .004 T.I.R.
 PERMISSIBLE SHAFT RUNOUT TO BE .004 T.I.R.



DASH NO.	"C"	"AD"
800	16.96	4.13
850	17.46	4.63
900	17.96	5.13
950	18.46	5.63
1000	18.96	6.13
1050	19.46	6.63
1100	19.96	7.13
1150	20.46	7.63

NO.	REVISION	BY & DATE
01	REMOVED "CE" DECALE.	ST 01-10-11

TOLERANCES UNLESS SPECIFIED	
DEC.	INCHES
.X	±.1
.XX	±.03
.XXX	±.005
.XXXX	±.0005
CHK	ANG ±1/2'
RFP	
DIST	

MARATHON ELECTRIC

TITLE: OUTLINE - 180JP FRAME
 DRIP PROOF - RIGID "C" - JP PUMP

CAD FILE: 035577

DRAWN KVN 09/25/2007
CHK
APPD
SCALE 3=8
REF 035575 & 035546
FMF 182TTDW7605
PREV
REV.

THIS DRAWING IN DESIGN AND DETAIL IS OUR PROPERTY AND MUST NOT BE USED EXCEPT IN CONNECTION WITH OUR WORK. ALL RIGHTS OF DESIGN AND INVENTION ARE RESERVED. THIS IS AN ELECTRONICALLY GENERATED DOCUMENT - DO NOT SCALE THIS PRINT.

VIEW FROM OUTSIDE OF MOTOR AT SWITCH END.



VOLTAGE	L1	L2	L3	JOIN & INSULATE
HIGH	T1	T2	T3	(T4,T7) (T5,T8) (T6,T9)
LOW	T1,T7	T2,T8	T3,T9	T4,T5,T6

TOLERANCES UNLESS SPECIFIED		DRAWN RDW 04/12/02		MARATHON ELECTRIC		CHK		
DEC.	INCHES			TITLE		APPD		
.X	±.1			EXTERNAL WIRING DIAGRAM		SCALE 1=1		
.XX	±.01			3 PHASE W/O PROTECTOR		REF FIG.2-51		
.XXX	±.005			MAT'L. DECAL - 004014		FMF		
.XXXX	±.0005			FINISH		PREV		
NO.	REVISION	BY & DATE	CHK	ANG	±1/2"	SIZE	DRAWING NO.	REV.
			RFP	04/12/02		A	005010-01ME	
			DIST					

THIS DRAWING IN DESIGN AND DETAIL IS OUR PROPERTY AND MUST NOT BE USED EXCEPT IN CONNECTION WITH OUR WORK ALL RIGHTS OF DESIGN AND INVENTION ARE RESERVED THIS IS AN ELECTRONICALLY GENERATED DOCUMENT - DO NOT SCALE THIS PRINT

CERTIFICATION DATA SHEET

Model#: 182TTDW14011 AA **WINDING#:** T82114 R1 3
CONN. DIAGRAM: 005010.01ME **ASSEMBLY:** F1/F2 CAPABLE
OUTLINE: 035577-900

TYPICAL MOTOR PERFORMANCE DATA

HP	KW	SYNC. RPM	F.L. RPM	FRAME	ENCLOSURE	KVA CODE	DESIGN
5&3	3.7&2.24	3600	3505&2940	182JP	DP	J	B

PH	Hz	VOLTS	FL AMPS	START TYPE	DUTY	INSL	S.F	AMB°C	ELEVATION
3	60/50	230/460#190/ 380	12.4/6.2&9.6/4 .8	ACROSS THE LINE	CONTINUOU S	F4	1.15/1.0	40	3300

FULL LOAD EFF: 85.5&85.5	3/4 LOAD EFF: 85.9	1/2 LOAD EFF: 83.9	GTD. EFF	ELEC. TYPE	NO LOAD AMPS
FULL LOAD PF: 87.5&84	3/4 LOAD PF: 84.2	1/2 LOAD PF: 76.4	82.6	SQ CAGE IND RUN	4.4 / 2.2

F.L. TORQUE	LOCKED ROTOR AMPS	L.R. TORQUE	B.D. TORQUE	F.L. RISE°C
7.5 LB-FT	100 / 50	17.3 LB-FT 231	26.2 LB-FT 349	35

SOUND PRESSURE @ 3 FT.	SOUND POWER	ROTOR WK^2	MAX. WK^2	SAFE STALL TIME	STARTS /HOUR	APPROX. MOTOR WGT
71 dBA	81 dBA	0.18 LB-FT^2	7 LB-FT^2	15 SEC.	2	64 LBS.

***** SUPPLEMENTAL INFORMATION *****

DE BRACKET TYPE	ODE BRACKET TYPE	MOUNT TYPE	ORIENTATION	SEVERE DUTY	HAZARDOUS LOCATION	DRIP COVER	SCREENS	PAINT
C-FACE	STANDARD	RIGID	HORIZONTAL	FALSE	NONE	PROVISIONS ONLY	NONE	RED (ENAMEL)

BEARINGS		GREASE	SHAFT TYPE	SPECIAL DE	SPECIAL ODE	SHAFT MATERIAL	FRAME MATERIAL
DE	OPE						
BALL	BALL	POLYREX EM	JP	NONE	NONE	AISI 1045 (C-240)	ROLLED STEEL
6207	6205						

THERMO-PROTECTORS				THERMISTORS	CONTROL	SPACE /n HEATERS
THERMOSTATS	PROTECTORS	WDG RTDs	BRG RTDs			
NONE	NOT	NONE	NONE	NONE	FALSE	NONE VOLTS

If Inverter equals NONE, contact factory for further information

INVERTER TORQUE: NONE
INV. HP SPEED RANGE: NONE
ENCODER: NONE
NONE NONE
NONE NONE PPR
BRAKE: NONE NONE
NONE P/N NONE
NONE NONE
NONE FT-LB NONE V NONE Hz

*
N
O
T
E
S
*

DATE: 06/27/2017 01:37:40 AM
FORM 3531 REV.3 02/07/99

** Subject to change without notice.

Data Sheet

182TTDW14011

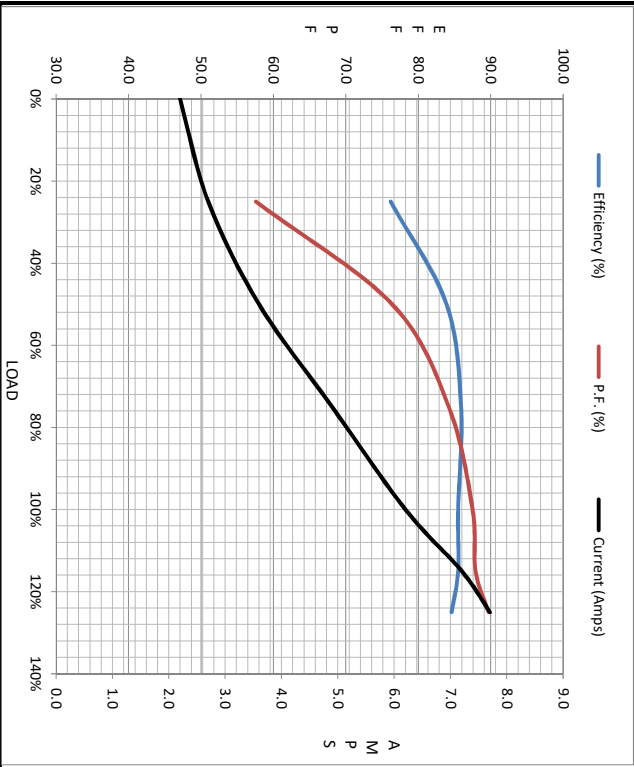


Submital Data @ 460 V

Date: 12/12/2018
 Customer:
 Attention:
 Submitted by: FAREEDA DUDEKULA

Motor Load Data									
Load	0%	25%	50%	75%	100%	115%	125%	LR	
Current (Amps)	2.20	2.70	3.6	4.9	6.2	7.2	7.7	50.0	
Torque (ft-lb)	0.00	1.80	3.7	5.6	7.5	8.7	9.5	17.3	
RPM	3600	3578	3555	3531	3505	3,488	3475	0	
Efficiency (%)		76.2	83.9	85.9	85.5	85.5	84.6		
P.F. (%)	14.5	57.6	76.4	84.2	87.5	87.9	89.7	0.0	

Motor Speed Data						Information Block																						
LR	Pull-Up	BD	Rated	Idle		HP	Sync. RPM	Frame	Enclosure	Construction	Voltage	Frequency	Design	LR Code letter	Service Factor	Temp Rise @ FL	Duty	Ambient	Elevation	Motor/Shaft wk ²	Ret Wdg	Sound Pressure @ 1M	VFD Rating	Outline Dwg	Conn. Diag	Additional Specifications:		
0	1800	2800	3505	3600		5.0	3600	182	DP	TDR	230/460#190/380	60	B	J	1.15	35	CONT	40 °C	1,000 feet	0.18 Lb-Ft ²	T82114 R1	0	dBa	NONE	035577-900	005010.01ME		
Speed (RPM)	0	1800	2800	3505	3600																							
Current (Amps)	50.0	45.0	32.5	6.2	2.20																							
Torque (ft-lb)	17.3	15.6	26.2	7.5	0.00																							



EQUIV CKT (OHMS / PHASE)			
R1	R2	X1	X2
0.0000	0.0000	0.0000	0.0000
			Km
			0.0000

